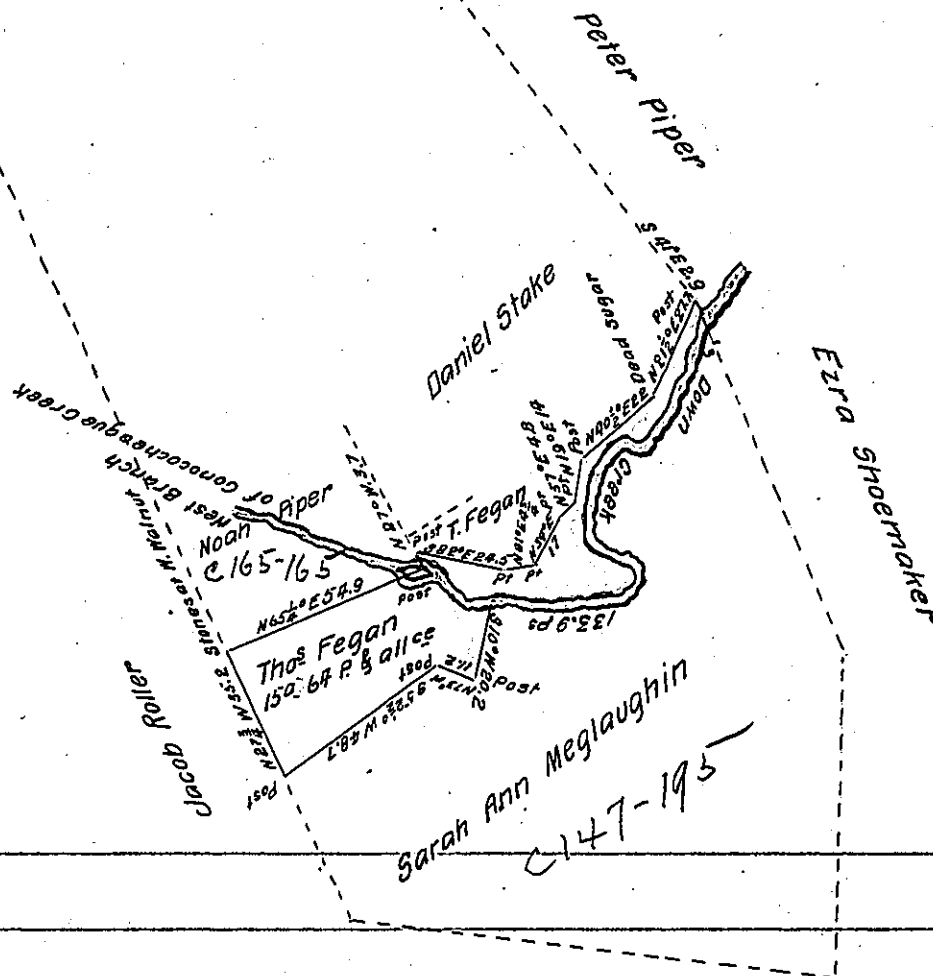


C221-169

Courses down Creek
 Beg at end of line S. 41. E. 2.9
 thence S 21 $\frac{3}{4}$ ° W 29.2
 S 34° W 14.2
 N 47° W 4.5
 S 60° W 4.8
 S 22° W 4.9
 S 3 $\frac{1}{4}$ ° W 17.6
 S 65° E 16.6
 S 51 $\frac{1}{2}$ ° W 9.5
 S 56 $\frac{1}{2}$ ° N 10.5
 S 83 $\frac{1}{4}$ ° W 9.2
 N 85° W 12.9
 133.9 Per



Draught of a tract of land situate in Fannett Township Franklin County Pa. Containing fifteen acres and sixty four perches and six per cent allowance for Roads, &c. Being a part of a tract of 270 acres 148 perches and allowance originally surveyed in pursuance of an application granted to Stephen Duncan dated the 13th day of December 1768. No 2168. Surveyed the above part for Thomas Fegan August 5th 1873.

John B. Kaufman C. S.

To Hon Robert B. Beath

Surveyor General.

IN TESTIMONY that the above is a copy of the original remaining on file in the Department of Internal Affairs of Pennsylvania, made conformably to an Act of Assembly approved the 16th day of February, 1833, I have hereunto set my Hand and caused the Seal of said Department to be affixed at Harrisburg, this third day of February 1905.

Anna R. [Signature]
 Secretary of Internal Affairs.